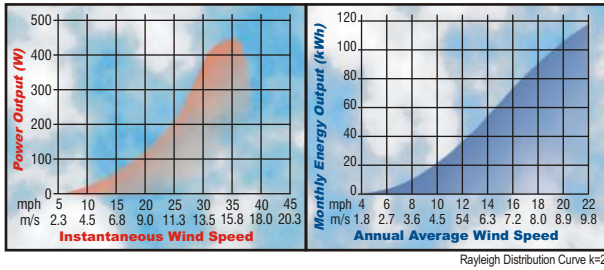
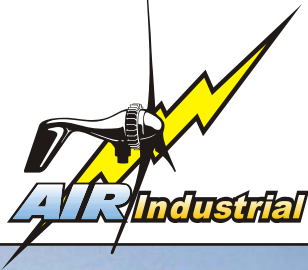


Performance Curve



Specifications

Rotor Diameter: 46" (1.15 meters)
 Turbine Weight: 14 lbs. (6.2 kg)
 Start up windspeed: 6 Knots (7 mph, 2.7 m/s)
 Voltage: 12, 24, 48 VDC
 Rated Output: 400 watts at 26 Knots
 (30 mph, 13.4 m/s)

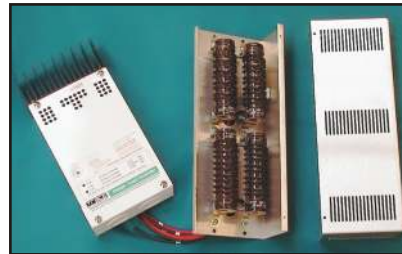


Offshore platform in the Gulf of Mexico



Features: Unprecedented 3 Year Warranty

- Anodized cooling fins for sustained high output
- High impact carbon fiber reinforced blades
- Variable pitch aeroelastic twist over-speed protection
- Exclusive brushless neodymium cubic curve alternator
- Maintenance free - only two moving parts
- Powder coated cast aluminum body
- Stainless steel hardware
- Now utilizes a PWM external regulator with resistive load dump for superior reliability in extreme wind conditions



3-041001.OAA09A

Southwest Windpower Renewable Energy Made Simple

2131 N. First Street • Flagstaff, Arizona 86004 USA
 Tel 520-779-9463 • Fax 520-779-1485
 www.windenergy.com • E-mail info@windenergy.com

REMOTE POWER FROM THE WIND!

EXTERNAL
 REGULATION FOR
 EXTREME ENVIRONMENTS



AIR Industrial

- Telecommunications systems
- Monitoring stations
- Offshore Platforms
- Navigational Aids

AIR Industrial

Minimize down times and reduce operating costs with an **AIR Industrial** wind turbine.

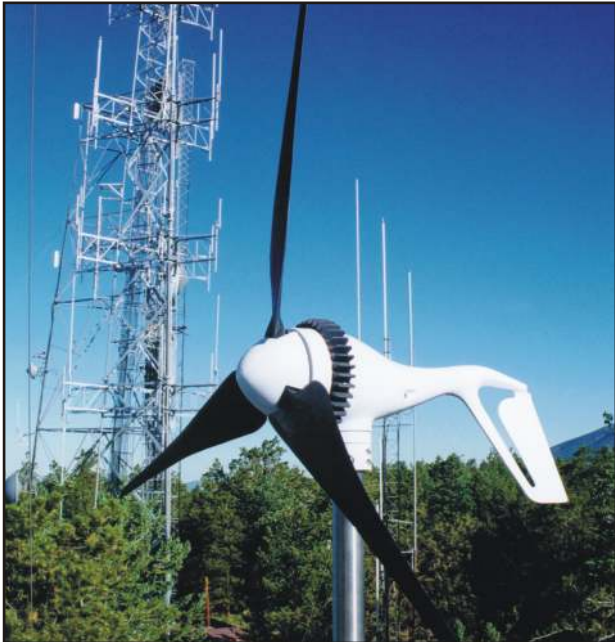
Based on the world's best selling wind turbine, the **AIR Industrial** has been designed to survive the harshest mountain-top and offshore sites.

When the **AIR Industrial** is combined with a solar array, you will experience a more consistent power supply by evening-out seasonal changes and weather fluctuations.

No need for a separate tower! The **AIR's** low wind loading and light-weight design allow it to be mounted on existing structures within a few hours.

In summary:

- More consistent power supply
- Reduced operating cost
- Reduced transportation costs
- Reduced wind loading
- Minimal space requirements
- Turbine is CE approved, emits no electrical interference
- Regulator is UL Listed and complies with EU directive 89/336/EEC for electromagnetic compatibility
- Simple installation

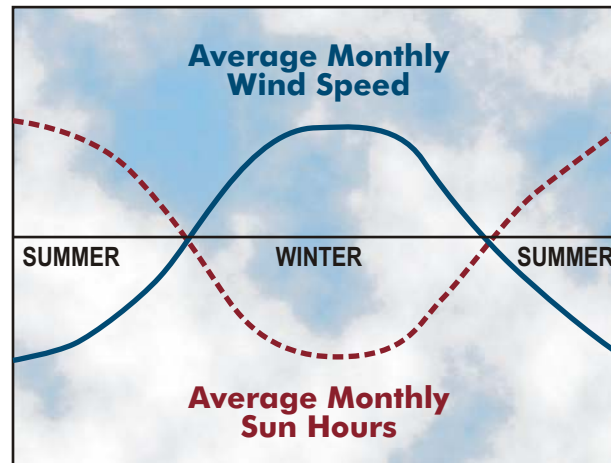


Three **Air Industrial** modules combined with PV provide power for a cell phone transmitter in the mountains near Phoenix, Arizona.

Utilize the **Air Industrial** with solar and have power in virtually any weather condition, all year round, at just about any remote site.

Seasonal Energy Resources

Wind & Solar



AIR Industrial

On land or at sea, the **Air Industrial** is a reliable energy source (shown here on a harbor beacon in Holland).

(Cover Photo)
An **Air Industrial** in the North Sea powering an offshore platform.

